

Week Ending: **Aug. 4, 2022**

Market Page 1.

	Thurs. Close	Last Thurs. Close	Weekly Change	Week's High	Week's Low	Life of Contract High	Life of Contract Low
--	--------------	-------------------	---------------	-------------	------------	-----------------------	----------------------

NEW YORK COTTON FUTURES (Cents/Lb.)

October-22	100.12	102.37	-2.25	104.06	98.00	140.47	55.02
December-22	94.62	96.21	-1.59	97.65	91.60	133.79	54.72
March-23	92.33	92.67	-0.34	94.19	89.24	127.80	54.77
May-23	90.84	91.15	-0.31	92.56	87.93	121.87	60.29
July-23	88.92	89.31	-0.39	90.70	86.22	116.54	65.03
October-23	83.68	83.42	0.26	84.21	82.75	108.87	65.22
December-23	81.76	81.71	0.05	83.38	79.50	98.40	69.10
March-24	81.26	81.11	0.15	81.84	80.39	96.97	69.78
May-24	81.41	81.18	0.23	81.99	80.77	96.13	73.36

CHICAGO CORN FUTURES (Cents/Bu.)

September-22	602.25	615.00	-12.75	632.00	583.00	778.75	369.50
December-22	606.25	619.00	-12.75	636.50	587.50	766.25	369.00
March-23	614.25	625.25	-11.00	642.25	595.00	768.50	395.75
May-23	618.75	628.75	-10.00	645.25	599.50	766.50	395.75
July-23	619.50	628.50	-9.00	644.50	601.00	760.00	383.75

CHICAGO SOYBEAN FUTURES (Cents/Bu.)

September-22	1461.25	1457.00	4.25	1516.00	1390.00	1606.75	842.75
November-22	1417.75	1440.50	-22.75	1489.00	1356.00	1584.75	840.00
January-23	1425.50	1447.50	-22.00	1495.00	1364.00	1587.75	971.75
March-23	1425.50	1444.00	-18.50	1487.25	1365.25	1572.25	971.75
May-23	1426.25	1440.75	-14.50	1481.75	1365.50	1567.50	971.75
July-23	1423.25	1436.00	-12.75	1476.00	1362.25	1562.50	861.50
August-23	1396.75	1407.75	-11.00	1443.75	1338.25	1532.25	980.50

WORLD MARKET (Cents/Lb.)

Effective August 5 - 11, '22

	Current	Forward
AWP	89.44	NA
5 Lowest Far East Quotes	114.36	NA
USFE Low Quote	116.20	NA
USFE-5 Lowest Far East Quotes	1.84	NA
Fine Count CFR Far East	116.02	NA
Coarse Count CFR Far East	118.07	NA
Fine Count Adj ('21 Crop)	0.59	NA
Fine Count Adj ('22 Crop)	0.54	NA
Coarse Count Adj	0.00	NA
Open Quotas	13	NA
LDP	0.00	NA
ELS Comp Pymnt	0.00	NA

CHINA WEEKLY PRICES (Cents/Lb.)

Week Ending August 4, 2022

	This Week	Year Ago	% Change
A (Far East)	116.88	98.72	18%
CnCotton A	108.87	125.39	-13%

Source: A (FE) - Cotton Outlook; Other - China Cotton Website

MY AVG. FARM PRICE

Upland Cotton (Cents/Lb.)	
21/22 YTD (Aug - June)	90.3
21/22 Proj.**	92.0
22/23 Proj.**	95.0
Cottonseed	
(\$/Ton)	(Cents/Lb.)
21/22 Proj. **	242 12.1
22/23 Proj.**	220 11.0

U.S. WEEKLY SPOT PRICES (Cents/Lb.)

Week Ending August 4, 2022		
	This Week	Year Ago
	3135	108.69 89.83
	4134	105.59 86.31

**20/21 and 21/22 projections by USDA.

Week Ending: **Aug. 4, 2022**

Market Page 2.

CCC LOAN STOCKS (Includes '20 & '21 Crop)

	As of July 31, 2022		
	Form A	Form G	Total
	(Running Bales)		
Upland			
Southeast	0	219,053	219,053
Mid-South	9,467	204,463	213,930
Southwest	0	55,787	55,787
West	0	7,475	7,475
U.S.	9,467	486,778	496,245
ELS			
U.S.	805	29,736	30,541

U.S. COTTON EXPORTS (Thou. 480-lb. Bales)

	Week Ending July 28, 2022				
	Week	Total	Total	Week	Total
	21/22	21/22	20/21	22/23	22/23
Sales	-115.7	16,549.9	17,561.7	78.2	5,043.8
Shipments	290.8	13,918.0	16,052.4	0.0	0.0

TOP 10 CUSTOMERS OF U.S. RAW COTTON (Thou. 480-Lb. Bales)

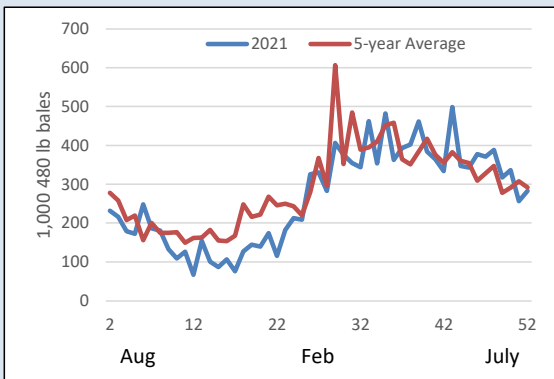
Country	21/22	21Share	22/23	22Share
CHINA	5,183	31%	1,036	21%
VIETNAM	2,235	14%	304	6%
TURKEY	2,189	13%	661	13%
PAKISTAN	1,871	11%	986	20%
MEXICO	1,069	6%	678	13%
BANGLADESH	776	5%	281	6%
INDIA	712	4%	77	2%
INDONESIA	482	3%	178	4%
PERU	318	2%	103	2%
THAILAND	279	2%	97	2%
TOTAL	16,550		5,044	

CCC LOAN INTEREST RATES

	Borrowing Rate	Interest Rate*
July	2.375%	3.375%
August	3.000%	4.000%

* Interest rate for crop year commodity loans less than one year.

WEEKLY EXPORT SHIPMENTS



CFTC DISAGGREGATED COMMITMENTS OF TRADERS

Options and Futures Combined				
As of August 2, 2022				
	Total Open Interest	Commercial Net Position	Swap Dealers Net Position	Non Commercial Net Position
Total	265,225	(55,735)	19,094	36,642
Weekly Change	5,082	196	2,066	(2,263)

ON-CALL COTTON (100 Bale Contracts)

Contract	As of July 29, 2022			
	Call Sales	Week's Change	Call Purch.	Week's Change
October '22	0	0	0	0
December '22	59,997	715	22,312	-132
March '23	8,746	570	3,287	-4
May '23	7,616	-67	142	22
July '23	12,630	297	125	9
December '23	5,726	370	13,310	279
March '24	309	0	0	0
May '24	131	-14	0	0
July '24	284	0	220	0
December '24	0	0	382	0
March '25	0	0	0	0

STATE OF THE ECONOMY

	Week Ending August 4, 2022		
	Thurs. Settlement	Last Thurs.	% Change YTD
Dow Jones Ind. Avg.	32,727	32,530	-10%
S&P 500	4,152	4,072	-13%
10-Yr Treas. Bond Rate	2.697%	2.676%	78%
NASDAQ Composite	12,721	12,163	-19%
Russell 2000	1,906	1,873	-15%
Japanese Nikkei 225	27,932	27,815	-3%
Hong Kong Hang Seng	20,174	20,623	-14%
Singapore Straits Times	3,270	3,221	5%
Shanghai Composite	3,189	3,283	-12%
Euro (in U.S.\$)	1.02	1.02	-10%
Japanese Yen (per U.S.\$)	132.94	134.25	15%
WTI Crude Oil (\$/barrel)	NA	99.11	NA
Diesel, Ultra-low (\$/gal)	NA	3.69	NA
Natural Gas (\$/million btu)	NA	8.33	NA

* Indicates changes from previous week based on revised data for last week.

Week Ending:

Aug. 4, 2022

Market Page 3.

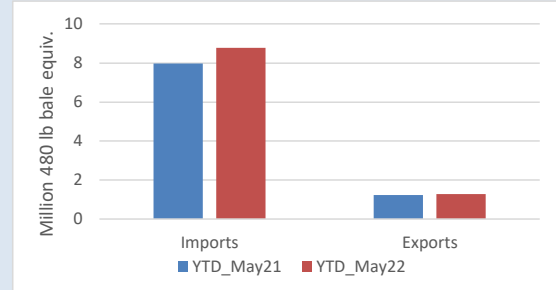
COTTON SUPPLY AND DEMAND (Million 480-lb. Bales)

Estimates for July 2022

	US		World	
	21/22	22/23p	21/22	22/23p
Beg. Stocks	3.2	3.4	88.1	84.0
Production	17.5	15.5	116.2	120.1
Imports	0.0	0.0	43.3	46.4
Total Supply	20.7	18.9	247.6	250.5
Mill Use	2.6	2.5	119.8	119.9
Exports	14.8	14.0	43.9	46.4
Total Use	17.3	16.5	163.7	166.3
Unaccounted For	0.0	0.0	-0.2	-0.1
End. Stocks	3.4	2.4	84.0	84.3
Stocks/Use Ratio	19.7%	14.5%	70.2%	70.3%

*21/22 estimates by USDA, 22/23 projections from USDA

U.S. COTTON TEXTILE TRADE



U.S. COTTON PLANTINGS, PRODUCTION, AND YIELD

	Production 480-	2021 Yield	2021 Actual	Estimated	Percent Change
	Lb. Bales (Thou.) 1/	per Harv. Acre (Lb.) 1/	Acreage (Thou.) 1/	Plantings (Thou.) 2/	
UPLAND					
SOUTHEAST	4,389	917	2,327	2,510	7.9%
Alabama	690	826	405	425	4.9%
Florida	120	640	92	95	3.3%
Georgia	2,210	914	1,170	1,200	2.6%
North Carolina	773	1,017	375	450	20.0%
South Carolina	425	986	210	260	23.8%
Virginia	171	1,109	75	80	6.7%
MID-SOUTH	3,744	1,131	1,625	1,860	14.5%
Arkansas	1,235	1,248	480	500	4.2%
Louisiana	219	1,011	110	170	54.5%
Mississippi	893	997	445	490	10.1%
Missouri	814	1,260	315	380	20.6%
Tennessee	583	1,036	275	320	16.4%
SOUTHWEST	8,580	676	6,955	7,780	11.9%
Kansas	187	880	110	130	18.2%
Oklahoma	693	756	495	550	11.1%
Texas	7,700	666	6,350	7,100	11.8%
WEST	478	1,346	182	172	-5.5%
Arizona	316	1,275	120	82	-31.7%
California	102	1,920	26	30	15.4%
New Mexico	60	1,108	36	60	66.7%
TOTAL UPLAND	17,191	813	11,089	12,322	11.1%
TOTAL ELS	332	1,287	127	156	23.3%
Arizona	18	982	9	20	122.2%
California	272	1,501	88	95	8.0%
New Mexico	16	640	13	19	52.0%
Texas	26	780	17	22	29.4%
ALL COTTON	17,523	819	11,216	12,478	11.3%

1/ USDA-NASS.

2/ USDA-NASS June Acreage Report.

US COTTONSEED SUPPLY AND DISAPPEARANCE

(000 Short Tons)

	Marketing Year	
	21/22	22/23
Beg. Stocks	393	422
Production	5,323	4,790
Imports	25	1
Total Supply	5,741	5,213
Crush	1,515	1,515
Exports	285	225
Other	3,519	3,095
Total Demand	5,319	4,835
End. Stocks	422	378

USDA-ERS July Oil Crops Outlook.

US COTTONSEED MEAL SUPPLY AND DISAPPEARANCE

(000 Short Tons)

	Marketing Year	
	21/22	22/23
Beg. Stocks	39	25
Production	675	675
Imports	0	0
Total Supply	714	700
Consumption	634	600
Exports	55	60
Demand	689	660
End. Stocks	25	40

USDA-ERS July Oil Crops Outlook.

US COTTONSEED OIL SUPPLY AND DISAPPEARANCE

(Million Pounds)

	Marketing Year	
	21/22	22/23
Beg. Stocks	48	45
Production	420	410
Imports	10	10
Total Supply	478	465
Domestic Consumption	333	355
Exports	100	65
Total Demand	433	420
End. Stocks	45	45

USDA-ERS July Oil Crops Outlook.

Week Ending: **Aug. 4, 2022**

Market Page 4.

US CROP PROGRESS

PERCENT SQUARING

PERCENT SETTING BOLLS

	PERCENT SQUARING				PERCENT SETTING BOLLS			
	7/31/2022	7/24/2022	7/31/2021	5-Yr Avg	7/31/2022	7/24/2022	7/31/2021	5-Yr Avg
Alabama	94	89	93	91	79	65	63	67
Arizona	100	100	100	98	85	83	91	84
Arkansas	99	97	97	99	88	79	89	93
California	90	85	98	87	45	30	63	56
Georgia	94	90	94	95	65	51	60	69
Kansas	98	97	84	79	61	40	38	26
Louisiana	99	97	100	100	89	83	80	87
Mississippi	93	90	89	92	73	61	62	69
Missouri	89	86	100	89	64	58	71	53
North Carolina	85	76	87	93	51	35	55	65
Oklahoma	85	68	70	82	32	10	22	30
South Carolina	94	90	93	87	70	64	65	55
Tennessee	96	84	86	92	66	51	48	61
Texas	86	75	76	84	51	45	39	39
Virginia	100	99	91	92	72	61	57	56
US	89	80	81	87	58	48	48	50
Southeast	93	88	93	93	66	52	60	66
Mid-South	95	91	94	94	75	66	71	73
Southwest	86	75	76	84	50	42	38	38
West	97	96	100	95	74	69	85	76

1/ These 15 states planted 99% of last year's cotton acreage.

* Revised.

US CROP CONDITION

	Week Ending				
	VP	P	F	G	E
Alabama	0	1	32	64	3
Arizona	1	1	19	43	36
Arkansas	2	13	20	48	17
California	0	0	5	90	5
Georgia	1	4	28	53	14
Kansas	2	23	40	32	3
Louisiana	0	11	26	61	2
Mississippi	5	11	40	38	6
Missouri	9	11	27	53	0
North Carolina	4	14	27	51	4
Oklahoma	22	32	39	7	0
South Carolina	0	5	20	61	14
Tennessee	16	16	27	35	6
Texas	22	14	39	21	4
Virginia	0	3	10	80	7
US	15	13	34	32	6
Previous Week	15	15	36	29	5
Previous Year	1	7	32	49	11



Cotton Quality Report



For the Week Ending August 4, 2022

Quality Page 1.

Classing Office	SAMPLES CLASSED				COLOR GRADE			
	Week	Percent		Season	% 31 or Better		% 41 or Better	
		Tenderable	Season		Tenderable	Week	Season	Week
Abilene	-	-	-	-	-	-	-	-
Corpus Christi	34,388	95.4	41,594	95.7	97.4	96.7	97.8	97.0
Dumas	-	-	-	-	-	-	-	-
Florence	-	-	-	-	-	-	-	-
Lamesa	-	-	-	-	-	-	-	-
Lubbock	-	-	-	-	-	-	-	-
Macon	-	-	-	-	-	-	-	-
Memphis	-	-	-	-	-	-	-	-
Rayville	-	-	-	-	-	-	-	-
Visalia	-	-	-	-	-	-	-	-
Region	-	-	-	-	-	-	-	-
Southeast	-	-	-	-	-	-	-	-
Mid-South	-	-	-	-	-	-	-	-
Southwest	34,388	95.4	41,594	95.7	97.4	96.7	97.8	97.0
West	-	-	-	-	-	-	-	-
United States	34,388	95.4	41,594	95.7	97.4	96.7	97.8	97.0
Classing Office	STAPLE AND STRENGTH				MICRONAIRE AND HVI TRASH			
	Average Staple		Average Strength		Average Mike		Average HVI Trash	
	Week	Season	Week	Season	Week	Season	Week	Season
Abilene	-	-	-	-	-	-	-	-
Corpus Christi	35.3	35.3	30.4	30.5	4.2	4.2	0.2	0.2
Dumas	-	-	-	-	-	-	-	-
Florence	-	-	-	-	-	-	-	-
Lamesa	-	-	-	-	-	-	-	-
Lubbock	-	-	-	-	-	-	-	-
Macon	-	-	-	-	-	-	-	-
Memphis	-	-	-	-	-	-	-	-
Rayville	-	-	-	-	-	-	-	-
Visalia	-	-	-	-	-	-	-	-
Region	-	-	-	-	-	-	-	-
Southeast	-	-	-	-	-	-	-	-
Mid-South	-	-	-	-	-	-	-	-
Southwest	35.3	35.3	30.4	30.5	4.2	4.2	0.2	0.2
West	-	-	-	-	-	-	-	-
United States	35.3	35.3	30.4	30.5	4.2	4.2	0.2	0.2
Classing Office	UNIFORMITY					Prepared by Economic Services of the National Cotton Council. You may contact us by mail at 7193 Goodlett Farms Parkway Cordova, TN 38016 ; by phone (901)274-9030.		
	Average Uniformity		Classing Office	Average Uniformity				
	Week	Season		Week	Season			
Abilene	-	-	Rayville	-	-			
Corpus Christi	81.2	81.2	Visalia	-	-			
Dumas	-	-	Region	-	-			
Florence	-	-	Southeast	-	-			
Lamesa	-	-	Mid-South	-	-			
Lubbock	-	-	Southwest	81.2	81.2			
Macon	-	-	West	-	-			
Memphis	-	-	United States	81.2	81.2			



Cotton Quality Report



For the Week Ending August 4, 2022

Quality Page 2.

State	SAMPLES CLASSED				COLOR GRADE			
	Percent Tenderable		Percent Tenderable		% 31 or Better		% 41 or Better	
	Week	Season	Week	Season	Week	Season	Week	Season
Alabama	-	-	-	-	-	-	-	-
Arizona	-	-	-	-	-	-	-	-
Arkansas	-	-	-	-	-	-	-	-
California	-	-	-	-	-	-	-	-
Florida	-	-	-	-	-	-	-	-
Georgia	-	-	-	-	-	-	-	-
Kansas	-	-	-	-	-	-	-	-
Louisiana	-	-	-	-	-	-	-	-
Mississippi	-	-	-	-	-	-	-	-
Missouri	-	-	-	-	-	-	-	-
New Mexico	-	-	-	-	-	-	-	-
North Carolina	-	-	-	-	-	-	-	-
Oklahoma	-	-	-	-	-	-	-	-
South Carolina	-	-	-	-	-	-	-	-
Tennessee	-	-	-	-	-	-	-	-
Texas	34,388	95.4	41,594	95.7	97.4	96.7	97.8	97.0
Virginia	-	-	-	-	-	-	-	-
United States	34,388	95.4	41,594	95.7	97.4	96.7	97.8	97.0

State	STAPLE AND STRENGTH				MICRONAIRE AND HVI TRASH			
	Average Staple		Average Strength		Average Mike		Average HVI Trash	
	Week	Season	Week	Season	Week	Season	Week	Season
Alabama	-	-	-	-	-	-	-	-
Arizona	-	-	-	-	-	-	-	-
Arkansas	-	-	-	-	-	-	-	-
California	-	-	-	-	-	-	-	-
Florida	-	-	-	-	-	-	-	-
Georgia	-	-	-	-	-	-	-	-
Kansas	-	-	-	-	-	-	-	-
Louisiana	-	-	-	-	-	-	-	-
Mississippi	-	-	-	-	-	-	-	-
Missouri	-	-	-	-	-	-	-	-
New Mexico	-	-	-	-	-	-	-	-
North Carolina	-	-	-	-	-	-	-	-
Oklahoma	-	-	-	-	-	-	-	-
South Carolina	-	-	-	-	-	-	-	-
Tennessee	-	-	-	-	-	-	-	-
Texas	35.3	35.3	30.4	30.5	4.2	4.2	0.2	0.2
Virginia	-	-	-	-	-	-	-	-
United States	35.3	35.3	30.4	30.5	4.2	4.2	0.2	0.2

State	UNIFORMITY				
	Average Uniformity		State	Average Uniformity	
	Week	Season		Week	Season
Alabama	-	-	Missouri	-	-
Arizona	-	-	New Mexico	-	-
Arkansas	-	-	North Carolina	-	-
California	-	-	Oklahoma	-	-
Florida	-	-	South Carolina	-	-
Georgia	-	-	Tennessee	-	-
Kansas	-	-	Texas	81.2	81.2
Louisiana	-	-	Virginia	-	-
Mississippi	-	-	United States	81.2	81.2

Prepared by Economic Services of the National Cotton Council. You may contact us by mail at 7193 Goodlett Farms Parkway Cordova, TN 38016 ; by phone (901)274-9030.